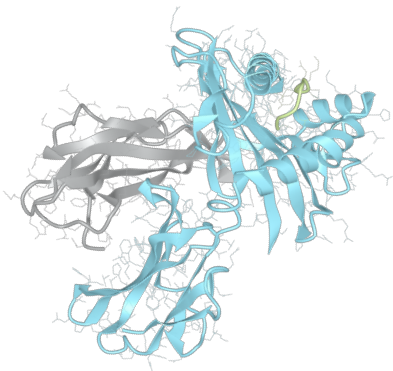


Product datasheet



sHLA-C*04:03bio

Cw*04:03, Cw*0403, C*0403, C0403
Cw0403, C*04, C04, Cw*04, Cw04, Cw4

Serological Name	Cw4
Peptide Load	Endogenous
Modification	Unmodified
Conjugation	Biotin
SKU	C0403bio

Product Description

Allele Name	C*04:03 B2m
HLA Class	HLA Class I
HLA Gene Locus	HLA-C
Alternative Allele Name A Chain	Cw*04:03, Cw*0403, C*0403, C0403, Cw0403, C*04, C04, Cw*04, Cw04, Cw4
Alternative Allele Name B Chain	-
Description	Recombinant, truncated Class I soluble Human Leukocyte Antigen (sHLA), naturally folded and glycosylated, loaded with endogenous peptides.
Serological Name	Cw4
Serological Split	Cw6
Bw4/Bw6 Assignment	-
Bw4/Bw6 Sequence	-
Allele Frequency [World Population]	
A chain	3.6%
B chain	-

Associated products

[C0403](#)
[C0403pe](#)

Product Specification

Product name	HLA-C*04:03bio
HLA Species	Human
Host Cell Line Species	Human
Clone Designation	D2
Tail Specification	VLDL
Peptide Load	Endogenous
Modification	Unmodified
Conjugation	Biotin
Complexity	Monomer
Protein Format	Recombinant, truncated, soluble, non-modified, biotinylated, endogenously loaded
Storage Temperature	4 °C (This product should be stored undiluted)
Form	Liquid
Concentration	300.0 µg/µl
Formulation	PBS/0.02% Sodium Azide
pH	7.4
Purification Method	Affinity Chromatography
Grade	Research Use Only [RUO]
Authentication Verification	Sequence Based Typing

Protein Sequences

Alpha Chain Sequence	GSHSMRYFYT AVSRPSRGEP HFIAVGYVDD TQFVRFSDSA ASPRGEPRAP WVEQEGPEYW DRETQKYKRQ AQADRVNLRK LRGYYNQSED GSHTLQRMFG CDLGPDGRLR RGYNQFAYDG KDYIALNEDL RSWTAADTAA QITQRKWEAA REAEQRRAYL EGTCVEWLR R YLENGKETLQ RAEHPKTHVT HHPVSDHEAT LRCWALGFYP AEITLTWQWD GEDQTQDTEL VETRPAGDGT FQKWAAVVVP SGEEQRYTCH VQHEGLPEPL TLRVSVSTDD DLA
Beta Chain Sequence	IQRTPKIQVY SRHPAENGKS NFLNCYVSGF HPSDIEVDLL KNGERIEKVE HSDLSFSKDW SFYLLYYTEF TPTEKDEYAC RVNHVTL SQP KIVKWRDRM

Related Products

[C0401bio](#)
[A0201bio](#)
[A0301bio](#)
[B0702bio](#)

Applications

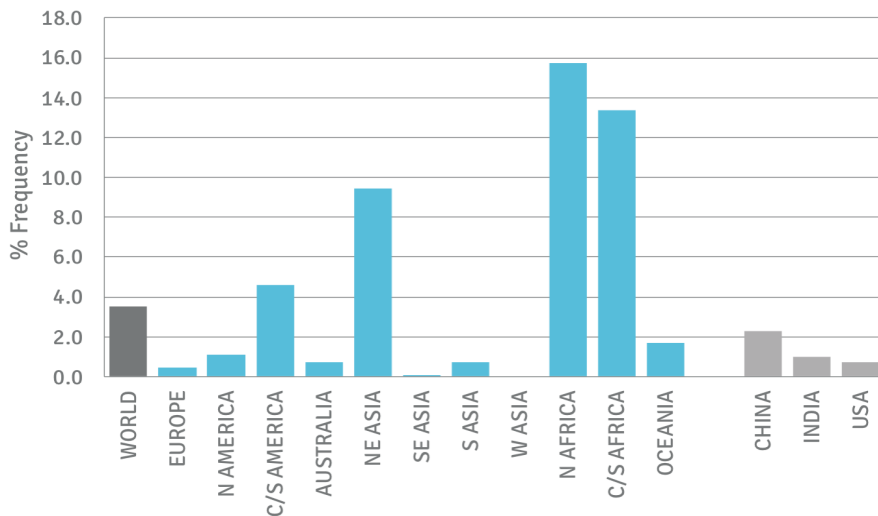
HLA Sandwich ELISAs
 HLA Direct ELISAs
 HLA-Sera Antibody Assays
 HLA Controls in ELISA Assays
 HLA Assay Standards
 HLA Blocking Assays
 HLA Neutralizing Assays
 HLA Competition Assays
 HLA Bead Assays
 HLA Immunization Procedures

Recommended Antibodies

W6/32
 Anti-B2m

Allele Frequency

Worldwide Allele Frequency



C*04:03

Please note:

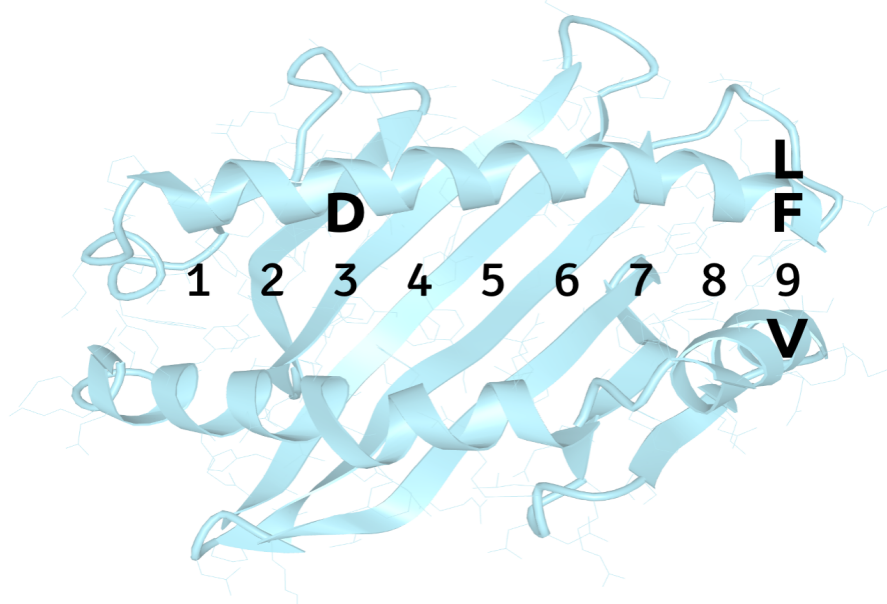
ALL PRODUCTS ARE FOR RESEARCH USE ONLY. NOT FOR COMMERCIAL USE IN DIAGNOSTIC PROCEDURES.
 For more information, please visit our Policies section on our website. For licensing inquiries, please contact

licensing@hlaprotein.com



Motif

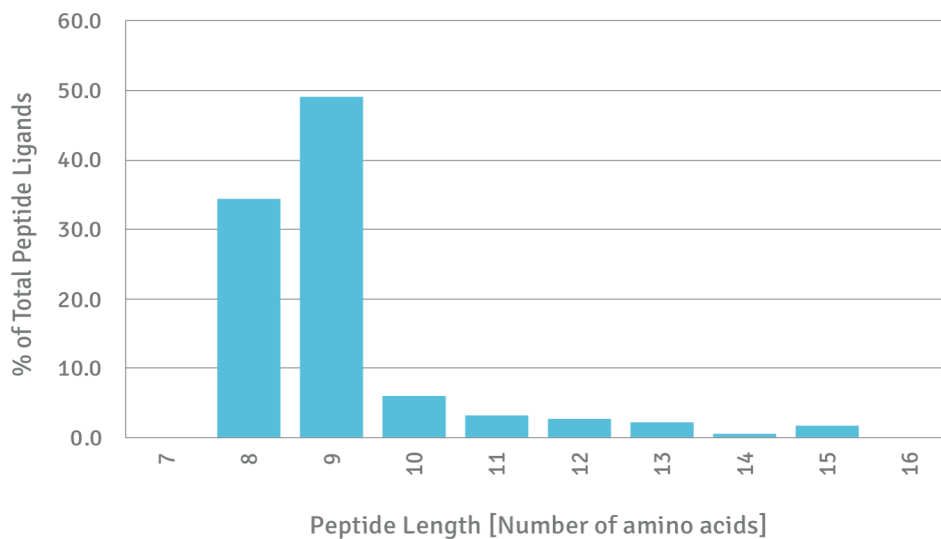
C*04:03 BINDING MOTIF



Length Distribution

HLA Length Distribution

C*04:03



Please note:

ALL PRODUCTS ARE FOR RESEARCH USE ONLY. NOT FOR COMMERCIAL USE IN DIAGNOSTIC PROCEDURES.

For more information, please visit our Policies section on our website. For licensing inquiries, please contact

licensing@hlaprotein.com

